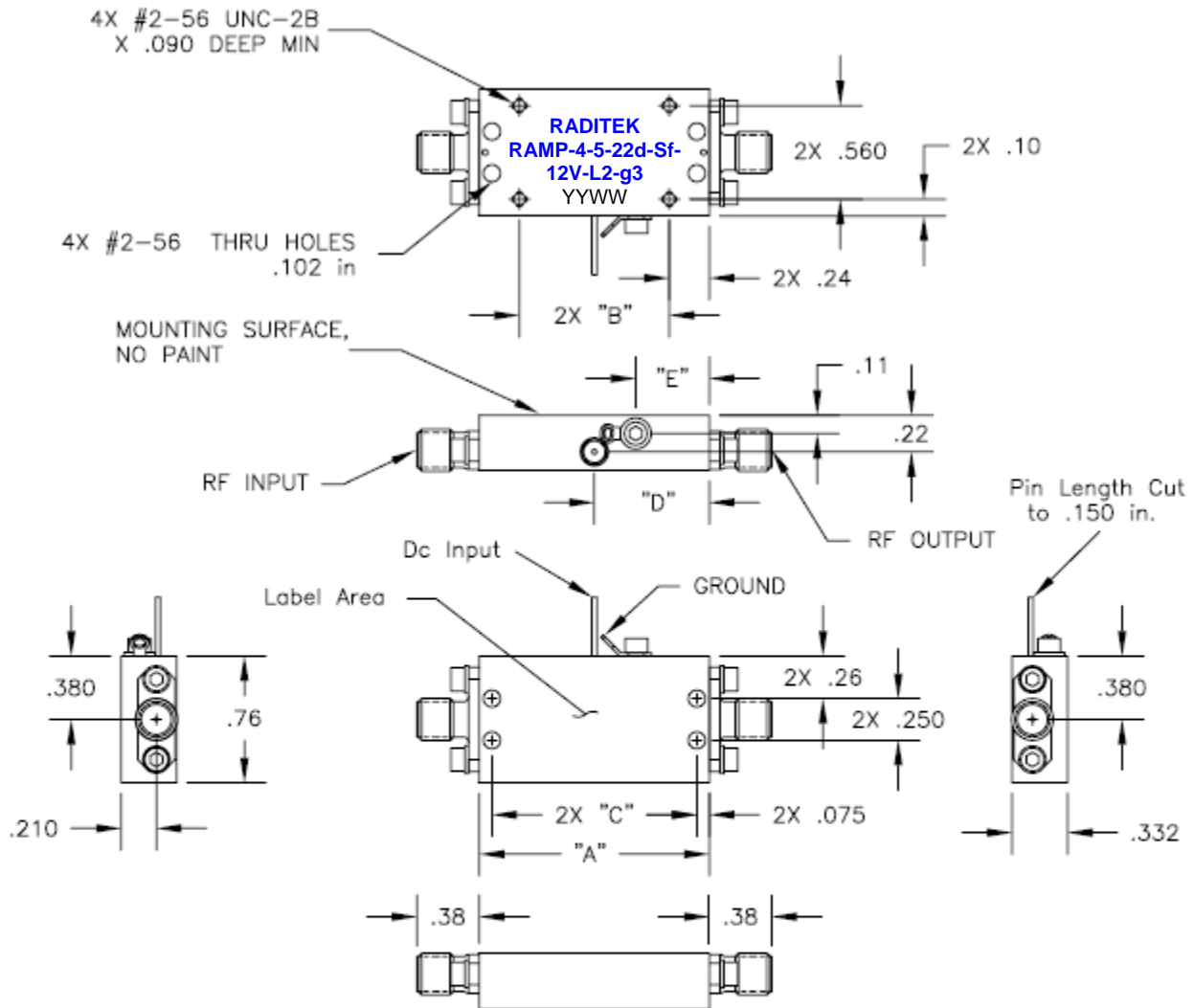


Low Power Amplifier, 4-5GHz, 22dB Gain SMA Female Connectors, 12Volts Supply



1. ALL TOLERANCES ARE BEFORE PAINT AND LABELING.
2. TOLERANCES ARE: XX ± .020
XXX ± .010
3. RF CONNECTORS ARE SMA FEMALE.

CASE	"A" DIM	"B" DIM	"C" DIM	"D" DIM	"E" DIM
L-1	.882	.402	.732	.441	.140
L-2	1.130	.650	.980	.441	.140
L-3	1.378	.898	1.228	.689	.441
L-4	1.626	1.146	1.476	.689	.937
L-5	1.874	1.394	1.724	.689	1.185

Order Examples: RAMP-4-5-22d-Sf-12V-L2-g3

Description: (Amplifier, 4-5GHz, 22dB Gain, SMA Female Connectors, 12V Supply Voltage, L2 Case Type)

RAMP-4-5-22d-Sf-12V-L2-g3

Specifications may be subject to change

06/29/11

WORLD HQ: 1702L Meridian Ave. Suite 127, San Jose, Ca 95125, U.S.A.

Tel: (408) 266-7404

FAX: (408) 266-4483

WEB: www.raditek.com

E-mail: sales@raditek.com

Low Power Amplifier, 4-5GHz, 22dB Gain SMA Female Connectors, 12Volts Supply

Parameter	Specification	Units
Frequency Range	4-5	GHz
Small Signal Gain	22	dB min
Gain Flatness	+/-0.5	dB max
Noise Figure:	5.0	dB max
Output Power (P-1)	+30	dBm Min.
Output Power (Psat)	+31	dBm Min.
IP3:	+40	dBm Typical
VSWR	Input	2.0:1
	Output	2.0:1
Input Power Handling	+18	dBm
Supply Voltage	+12	Vdc
Current	425	mA Max
	375	mA Typ
Operating Temperature	-20 to +70	deg C
Storage Temperature	-54 to +125	deg C
Case Type	L-2	
Connector Type	SMA-F	In
	SMA-F	Out

Finish And Labeling:

Mil-Spec Paint - Green, Label to include P/N, Serial Number, Date Code, Input/Output and Supply Voltage.

Final Acceptance Testing:

All units to be provided with Standard Acceptance Data: Gain, Noise figure, Power, VSWR In/Out, and Current at +25 °C.

*Certificate of Compliance provided.

**Inspection System: Mil-I-45208A