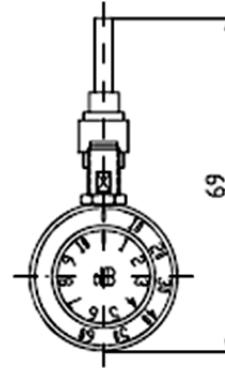
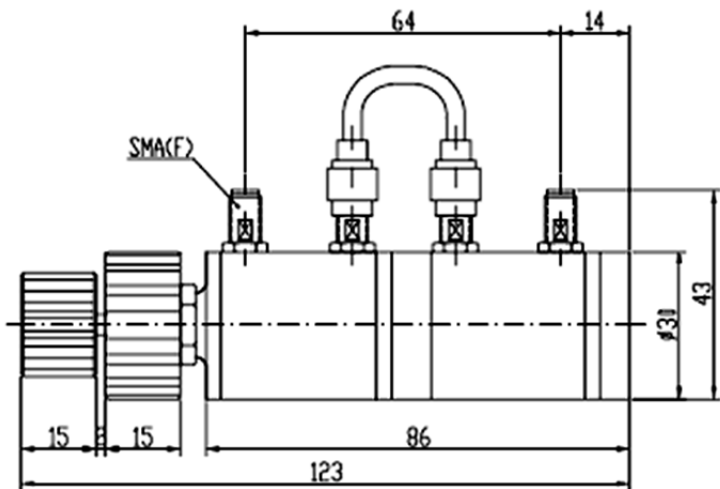


Variable/Step Attenuator, DC-6GHz, full or split bands (0-100dB) 1dB step, SMA or N Connector, 2 Watts



Unit: mm
Dimensions Tolerance $\pm 2\%$

Order Examples: RVATTN-DC-6-(0-70dB)1dB step-SMAf-2W-h14

Description: (Variable/Step Attenuator, DC-6GHz, (0-70dB) 1dB step, SMA Female Connector, 2 Watts)

Frequency Range(GHz)	Attenuation Step Size	Max VSWR		Insertion Loss(dB)	Attenuation Accuracy (dB)
		SMA	N/BNC		
DC-1	0-11dB in 0.1dB steps	1.25		≤ 0.6	$\pm 0.2\text{dB}(\leq 1\text{dB})$ $\pm 0.3\text{dB}\{>1\text{dB}\}$
DC-2.5		1.4	1.5	≤ 1.0	
DC-3		1.4	1.5	≤ 1.2	
DC-4.3		1.5	1.6	≤ 1.5	
DC-6		1.7	1.75	≤ 1.8	
DC-1	0-70dB in 1dB steps	1.25		≤ 0.6	$\pm 0.3\text{dB}(\leq 10\text{dB})$ $\pm 0.8\text{dB}(\leq 60\text{dB})$ $\pm 1.5\text{dB}\{>60\text{dB}\}$
DC-2.5		1.4	1.5	≤ 1.0	
DC-3		1.4	1.5	≤ 1.2	
DC-4.3		1.5	1.6	≤ 1.5	
DC-6		1.7	1.75	≤ 1.8	
DC-1	0-100dB in 1dB steps	1.25		≤ 0.6	$\pm 0.3\text{dB}(\leq 10\text{dB})$ $\pm 0.8\text{dB}(\leq 60\text{dB})$ $\pm 1.5\text{dB}(\leq 70\text{dB})$ $\pm 3.5\text{dB}\{>70\text{dB}\}$
DC-2.5		1.4	1.5	≤ 1.0	
DC-3		1.4	1.5	≤ 1.2	

Mechanical Specifications	
Connectors	Brass Nickel Plated
Female Pin	Beryllium Copper Gold Plated
Housing	Brass Silver Plated
Temp Range	-20°C - $+85^{\circ}\text{C}$
Dimensions	$\Phi 30 \times 123\text{mm}$ (Without Connector)
Weight	435g

NOMINAL IMPEDANCE: 50 Ω
 AVERAGE POWER: 2W
 PEAK POWER: 100W (5 μs pulse width with 2% duty cycle)
 CONNECTOR TYPE: SMA (F,F); N(F,F)