

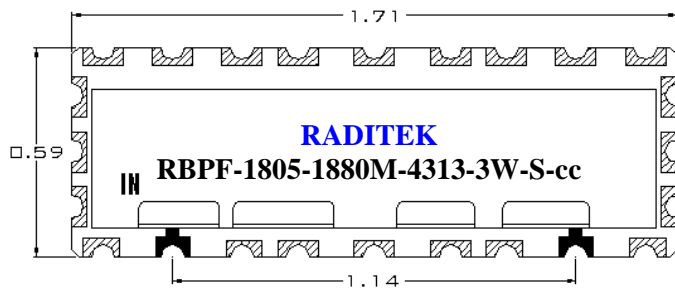
RADITEK INC.

Ceramic Band Pass Filter

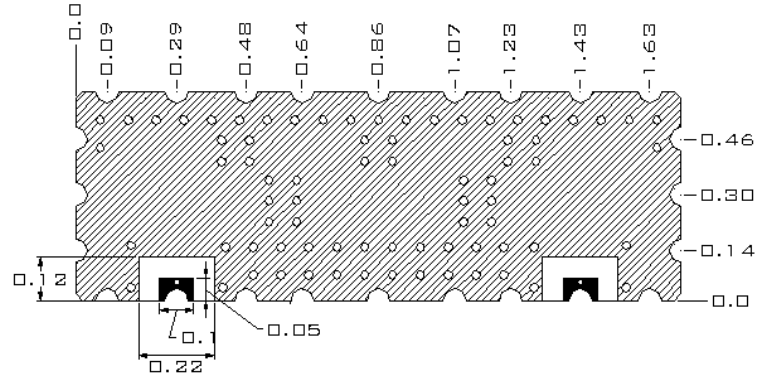
code-j2

1805 MHz to 1880 MHz, Model 4314, 3 Watts, Surface Mount
RBPF-1805-1880M-4314-3W-S-cc

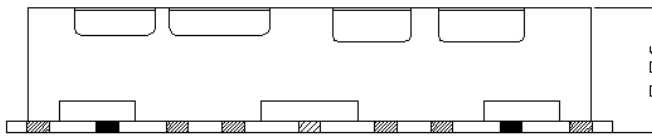
TOP VIEW



BOTTOM VIEW



FRONT VIEW



I/O PORT
 GROUND
 TOLERANCE : ± 0.01
 UNIT : INCH

ELECTRICAL SPECIFICATIONS

ITEM	SPEC	Unit
1	Center Frequency [fo]	1842.5
2	Bandwidth [BW]	$fo \pm 37.5$ min. [1805 ~ 1880]
3	Insertion Loss at fo	3.0 max.
4	Ripple in BW	1.5 max.
5	Return Loss in BW	15.0 min.
6	Input Power	3W max.
7	In/Out Impedance	50 Ω
8	Attenuation [Absolute Value]	40.0 dB min. @ fo - 57.5 [1785] MHz
9	Operation Temperature Range	-40°C to +85°C

RADITEK INC.

Ceramic Band Pass Filter

1805 MHz to 1880 MHz, Model 4314, 3 Watts, Surface Mount
RBPF-1805-1880M-4314-3W-S-cc

code-j2

RECOMMENDED PC BOARD PATTERN

