

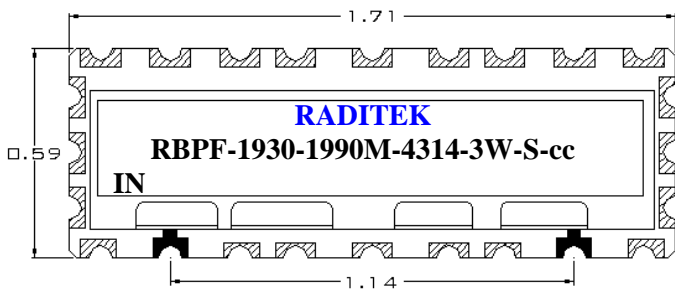
# RADITEK INC.

## Ceramic Band Pass Filter

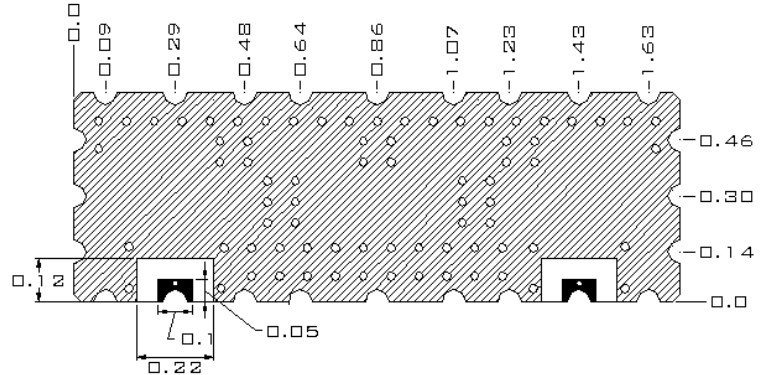
code-j2

1930 MHz to 1990 MHz, Model 4314, 3 Watts, Surface Mount  
**RBPF-1930-1990M-4314-3W-S-cc**

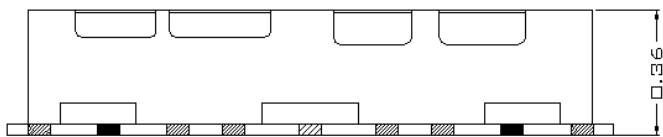
TOP VIEW

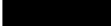


BOTTOM VIEW



FRONT VIEW



 I/O PORT

 GROUND

TOLERANCE :  $\pm 0.01$

UNIT : INCH

### ELECTRICAL SPECIFICATIONS

ITEM	SPEC	Unit
1	Center Frequency [fo]	1960.0 MHz
2	Bandwidth at 1dB[BW]	$fo \pm 30.0$ min. [ 1930 ~ 1990 ] MHz
3	Bandwidth at 3dB[BW]	$fo \pm 32.5$ max. [1927.5~1992.5] MHz
4	Insertion Loss at fo	3.0 max. dB
5	Ripple in BW	2.0 max. dB
6	Return Loss in BW	15.0 min. dB
7	Input Power	3W max.
8	In/Out Impedance	50 $\Omega$
9	Attenuation [Absolute Value]	60.0 dB min. @ 1850~1910 MHz
10	Operation Temperature Range	-40°C to +85°C

# RADITEK INC.

## Ceramic Band Pass Filter

1930 MHz to 1990 MHz, Model 4314, 3 Watts, Surface Mount  
RBPF-1930-1990M-4314-3W-S-cc

code-j2

### RECOMMENDED PC BOARD PATTERN

