

# RADITEK INC.

## Surface Acoustic Wave Band Pass Filter 698-750MHz, Model 3838, Surface Mount RSAW-BPF-698-750M-3838-S-g2

code-g2

### ELECTRICAL SPECIFICATIONS:

Parameter	Unit	Minimum	Typical	Maximum
Center Frequency	MHz	-	746	-
Usable Passband BW	MHz		±1.0	
Insertion Loss (within $f_c \pm 1.0\text{MHz}$ )	dB	-	3.8	5.0
3dB Bandwidth	MHz	-	10.5	-
Relative Rejection				
$f_c - 100.0\text{ MHz} \dots f_c - 12.00\text{MHz}$	dB	32	38	-
$f_c + 12.00\text{ MHz} \dots f_c + 30.00\text{MHz}$	dB	32	38	-
$f_c + 30.00\text{ MHz} \dots f_c + 100.0\text{MHz}$	dB	36	45	-
Passband Ripple (within $f_c \pm 1.0\text{MHz}$ )	dB	-	-	1.5
Input/ Output Impedance (Nominal)	Ohm	50		
Input Power Level	dBm	10		
DC Voltage	V	12		
Storage Temperature	°C	-40 to +85		
Operating Temperature	°C	-10 to +65		

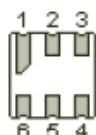
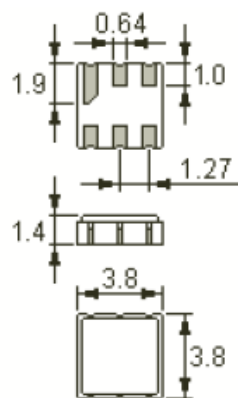
1. The frequency  $f_c$  is defined as the midpoint between the 3dB frequencies.
2. Unless noted otherwise, all measurements are made with the filter installed in the specified test fixture that is connected to a  $50\Omega$  test system with  $VSWR \leq 1.2:1$ . The test fixture L and C are adjusted for minimum insertion loss at the filter center frequency,  $f_c$ . Note that insertion loss, bandwidth, and passband shape are dependent on the impedance matching component values and quality.
3. Unless noted otherwise, specifications apply over the entire specified operating temperature range.
4. The specifications of this device are based on the test circuit shown above and subject to change or obsolescence without notice.
5. All equipment designs utilizing this product must be approved by the appropriate government agency prior to manufacture or sale.
6. Our liability is only assumed for the Surface Acoustic Wave (SAW) component(s) per se, not for applications, processes and circuits implemented within components or assemblies.

# RADITEK INC.

## Surface Acoustic Wave Band Pass Filter 698-750MHz, Model 3838, Surface Mount RSAW-BPF-698-750M-3838-S-g2

code-g2

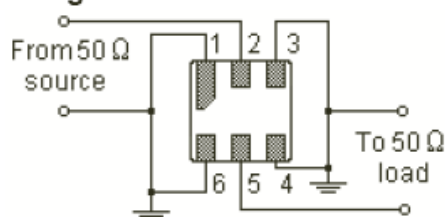
### PACKAGE DIMENSIONS:



Unit: mm

Pin	Configuration
2	Input
5	Output
1, 3, 4, 6	Ground

### Matching Circuit



### Typical Frequency Response



RSAW-BPF-698-750M-3838-S-g2

Specifications may be subject to change

02/18/09

WORLD HQ: 1702L Meridian Ave. Suite 127, San Jose, Ca 95125, U.S.A.

Telephone: (408) 266-7404 FAX: (408) 266-4483

WEB: [www.raditek.com](http://www.raditek.com), E-mail: [sales@raditek.com](mailto:sales@raditek.com)