

RADITEK INC.

Surface Acoustic Wave Band Pass Filter 698-806MHz, Model 5050, Surface Mount RSAW-BPF-698-806M-5050-S-g2

code-g2

ELECTRICAL SPECIFICATIONS:

Parameter	Unit	Minimum	Typical	Maximum
Center Frequency	MHz	-	864	-
Insertion Loss (within $f_c \pm 1.0$ MHz)	dB	-	-	4.0
Absolute Attenuation				
1) within 820-823 MHz	dB	40	-	-
2) within 841-844 MHz	dB	35	-	-
3) within 884-887 MHz	dB	35	-	-
4) within 905-908 MHz	dB	40	-	-
Ripple Deviation (within $f_c \pm 1.0$ MHz)	dB	-	-	1.5
Input/ Output Impedance (Nominal)	Ohm	50		
Input Power Level	dBm	10		
DC Voltage	V	12		
Storage Temperature	°C	-40 to +85		
Soldering Temperature	°C	+235		

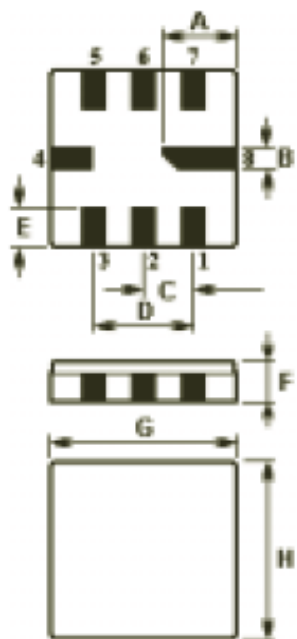
1. The frequency f_c is defined as the midpoint between the 3dB frequencies.
2. Unless noted otherwise, all measurements are made with the filter installed in the specified test fixture that is connected to a 50 Ω test system with VSWR \leq 1.2:1. The test fixture L and C are adjusted for minimum insertion loss at the filter center frequency, f_c . Note that insertion loss, bandwidth, and passband shape are dependent on the impedance matching component values and quality.
3. Unless noted otherwise, specifications apply over the entire specified operating temperature range.
4. The specifications of this device are based on the test circuit shown above and subject to change or obsolescence without notice.
5. All equipment designs utilizing this product must be approved by the appropriate government agency prior to manufacture or sale.
6. Our liability is only assumed for the Surface Acoustic Wave (SAW) component(s) per se, not for applications, processes and circuits implemented within components or assemblies.

RADITEK INC.

Surface Acoustic Wave Band Pass Filter 698-806MHz, Model 5050, Surface Mount RSAW-BPF-698-806M-5050-S-g2

code-g2

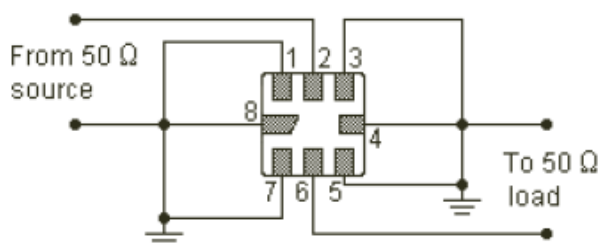
PACKAGE DIMENSIONS:



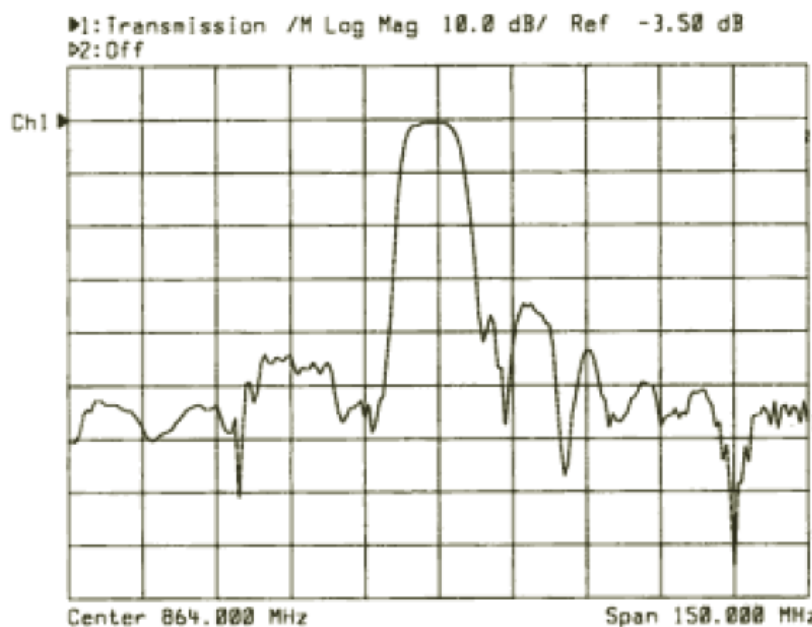
Pin	Configuration
2	Input / Output
6	Output / Input
Others	Ground

Sign	Data (Unit: mm)	Sign	Data (Unit: mm)
A	2.08	E	1.20
B	0.60	F	1.35
C	1.27	G	5.00
D	2.54	H	5.00

Test Circuit



Typical Frequency Response



RSAW-BPF-698-806M-5050-S-g2

Specifications may be subject to change

02/18/09

WORLD HQ: 1702L Meridian Ave. Suite 127, San Jose, Ca 95125, U.S.A.

Telephone: (408) 266-7404 FAX: (408) 266-4483

WEB: www.raditek.com, E-mail: sales@raditek.com