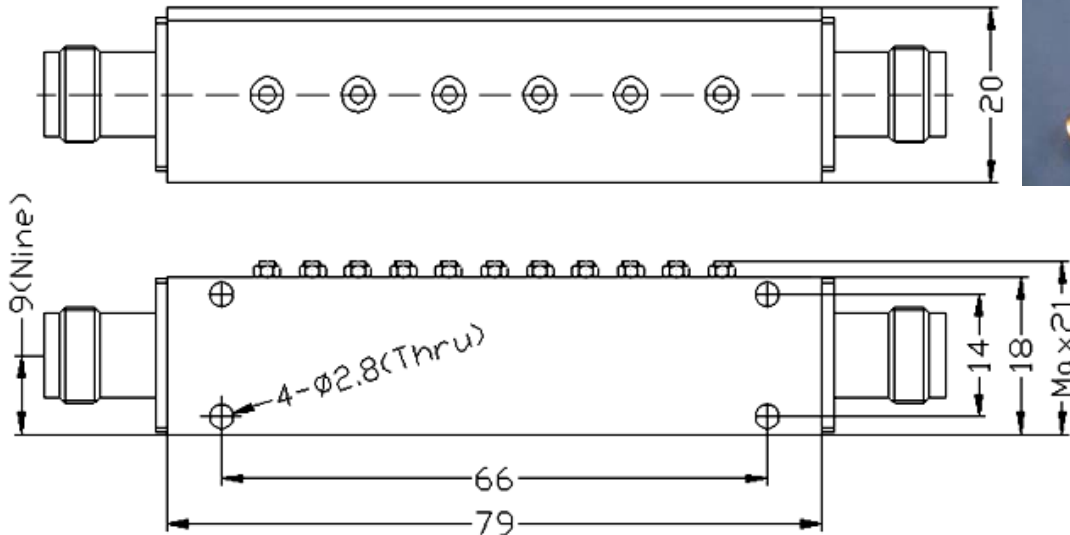


Cavity Band Pass Filter, 4.825-4.925GHz TNC Male or Female Connectors, 10Watts

TNC Female



**See page 2 for
outline TNC Male**

**Units: mm
Not to scale**

Order Examples: RCBPF-4.825-4.925-TNCf-10W-c14

Description: (Cavity Band Pass Filter, 4.825-4.925GHz, TNC Female Connectors, 10Watts)

Specifications		Units
Center Frequency(F0)	4.875	GHz
Pass Band Frequency	4.825-4.925	GHz
Insertion Loss	≤ 1.5	dB
Return Loss	≥ 15	dB
Stop Band Attenuation	≥ 50 @ $F0 \pm 200\text{MHz}$ (DC-4.675GHz; 5.075-8.0GHz)	dB
Impedance	50	ohms
Surface Finish	Black Paint	
Power Handling	≤ 10	W
Connectors	TNC-Female or TNC-Male	

Cavity Band Pass Filter, 4.825-4.925GHz TNC Male or Female Connectors, 10Watts

