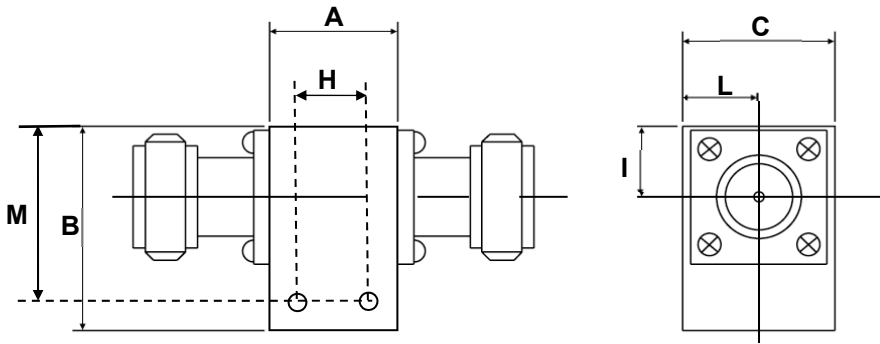


Coaxial Isolator-7.9-22.0GHz, Split bands SMA or N-Type Connectors, 1, 2 or 10 Watts



Units: mm
Not to scale

Tolerance Table Metric (inch)

(unless otherwise stated):

- Hole diameter +/- 0.1mm, (+/- 0.004")
- Dimensions (w*h) +/- 0.3 mm, (+/- 0.015")
- Dimensions (Coax Connector position) +/- 0.3mm, (+/- 0.012")
- Dimensions (Microstrip pad, Stripline Tab, Waveguide Slot Position, +/- 0.1mm, (+/- 0.04")
- Dimensions (hole position) +/- 0.1mm, (+/- 0.04")

Machined surfaces

- Flatness 0.025/mm, (0.001/ inch)
- Bend radius 0.8mm. (0.031" or 1/32")

Direction of RF:	
R	Default
L	

Order Examples: RADI-13-18-N3-10WR
I=ISOLATOR

N / SMA Connector options (X)		
Isolator		
Port 1	Port 2	
Female	Male	-1
Male	Female	-2
Female	Female	-3
Male	Male	-4

Dimensions:

Size#	A	B	C	I	L	H	M	
1	12.0	23.0	19.0	9.4	9.5	--	--	mm
2	12.0	20.0	13.0	6.0	6.5	8.0	14	mm
3	12.0	20.0	13.0	6.5	6.5	8.0	14	mm

Specifications:

Size#	Specifications: Frequency GHz	Insertion loss dB (max)	Isolation dB (min)	VSWR (max)	Power Fwd Watts	Power Rev Watts	Op. Temp °C	Connector
1	7.9-8.4	0.3	23	1.20:1	10	2	-30 to +70	N-Type
3	10-14	0.5 0.6	20 18	1.25:1 1.30:1	2	1	room -40 to +75	SMA
2	10-15	0.5	18	1.25:1	2		0 to +50	SMA

Coaxial Isolator-7.9-22.0GHz, Split bands SMA or N-Type Connectors, 1, 2 or 10 Watts

Size#	Specifications: Frequency GHz	Insertion loss dB (max)	Isolation dB (min)	VSWR (max)	Power Fwd Watts	Power Rev Watts	Op. Temp °C	Connector
2	10-15	0.5 0.6	20 18	1.25:1 1.30:1	20	10	room -40 to +70	SMA
3	10-15	0.5 0.6	20 18	1.25:1 1.30:1	1	1	room -40 to +70	SMA
2	10.5-12.8	0.5	20	1.25:1	1	1	-30 to +70	SMA
3	10.70-12.75	0.45	20	1.25:1	2	2	-30 to +70	SMA
2	10.7-11.95	0.5	20	1.25:1	20	1	-25 to +85	SMA
2	10.7-13.0	0.5	20	1.25:1	10	10	-30 to +70	SMA
2	10.7-13.25	0.4 0.5	20 18	1.25:1 1.30:1		10	room -40 to +75	SMA
3	11-12	0.5	20	1.25:1	1	1	-10 to +65	SMA
2	11.4-12.8	0.4	23	1.20:1	10	10	0 to +60	SMA
2	12.7-14.5	0.5	20	1.25:1	10	10	-30 to +70	SMA
1	13-18	0.7	20	1.45:1	10	10	-40 to +70	N-Type
2	13.75-14.50	0.4	23	1.20:1	1	1	-30 to +70	SMA
2	14.0-14.5	0.4	23	1.20:1	10	10	0 to +60	SMA
2	17.2-18.1	0.5	23	1.30:1	10	10	0 to +60	SMA
2	17.3-18.4	0.5	20	1.30:1	10	10	-30 to +70	SMA
3	18-22	0.60 0.65	18 17	1.35:1 1.40:1	2	2	room -30 to +70	SMA