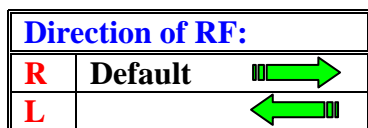
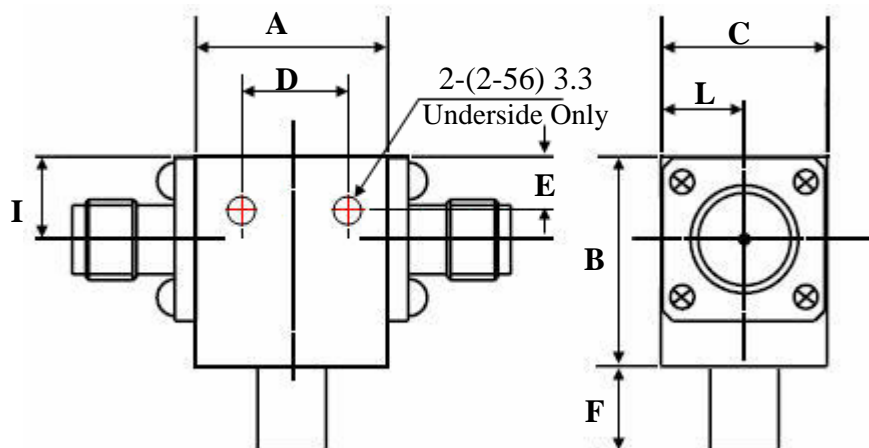


Coaxial Isolator, 8.5-9.6GHz SMA Connectors, 10 Watts RADI-8.5-9.6-S3-10WR



Units: mm
Not to scale

Order Examples: RADI-8.5-9.6-S3-10WR
I=ISOLATOR / C=CIRCULATOR

N / SMA Connector options (X)				
Isolator			Circulator	
Port 1	Port 2		Port 3 Male	Port 3 Female
Female	Male	-1	-11	-21
Male	Female	-2	-12	-22
Female	Female	-3	-13	-23
Male	Male	-4	-14	-24

Size#	A	B	C	D	E	F	I	L	
1	12.7	16.0	12.7	9.5	4.0	4.4	6.35	6.35	mm
									mm

Size#	Specifications: Frequency GHz	Insertion loss dB (max)	Isolation dB (min)	VSWR :1	Power Fwd Watts	Power Rev Watts	Op. Temp °C	Connector
1	8.5-9.6	0.3	23	1.15	10	10	-30 to +65	SMA