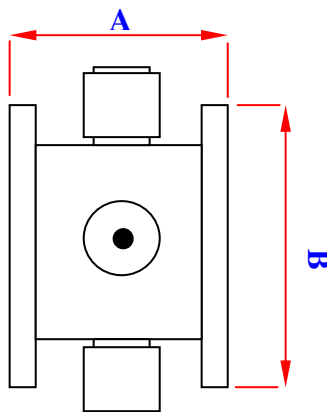
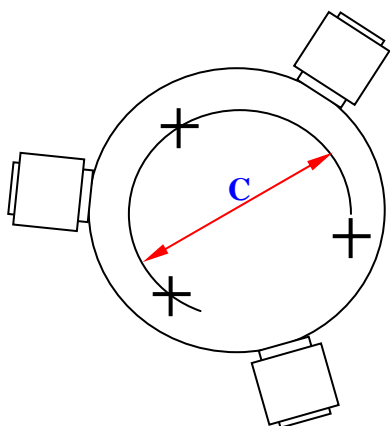
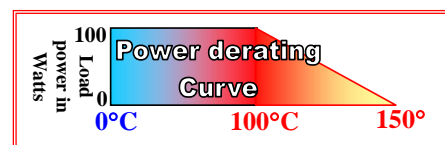


**Coaxial Circulator, 1020-1100MHz  
N-Type Connector, 50 Watts, 5 kilowatts Peak  
RADC-1020-1100M-N23-50WR(5kW Peak)**



<u>Tolerance (unless otherwise stated):</u>	
Hole diameter	±0.004
Dimensions	±0.015
Machined surfaces	63√
Flatness	±0.001/inch
Bend radius	1/32 inch



<b>Direction of RF:</b>	
<b>R</b>	Default
<b>L</b>	

Units: mm  
Not to scale

**Order Examples: RADC-1020-1100M-N23-50WR(5kW Peak)**  
**I=ISOLATOR / C=CIRCULATOR**

<b>N / SMA Connector options (X)</b>				
<b>Isolator</b>			<b>Circulator</b>	
<b>Port 1</b>	<b>Port 2</b>		<b>Port 3 Male</b>	<b>Port 3 Female</b>
Female	Male	-1	-11	-21
Male	Female	-2	-12	-22
Female	Female	-3	-13	-23
Male	Male	-4	-14	-24

A	B	C	
42	103	94	mm

Specifications: Frequency MHz	Insertion loss dB (max)	Isolation dB (min)	VSWR :1	Power Avg. Watts	Power Peak kWatts	Temp °C	Connector
1020-1100	0.4	20	1.20	50	5	-10 to +70	N-Type