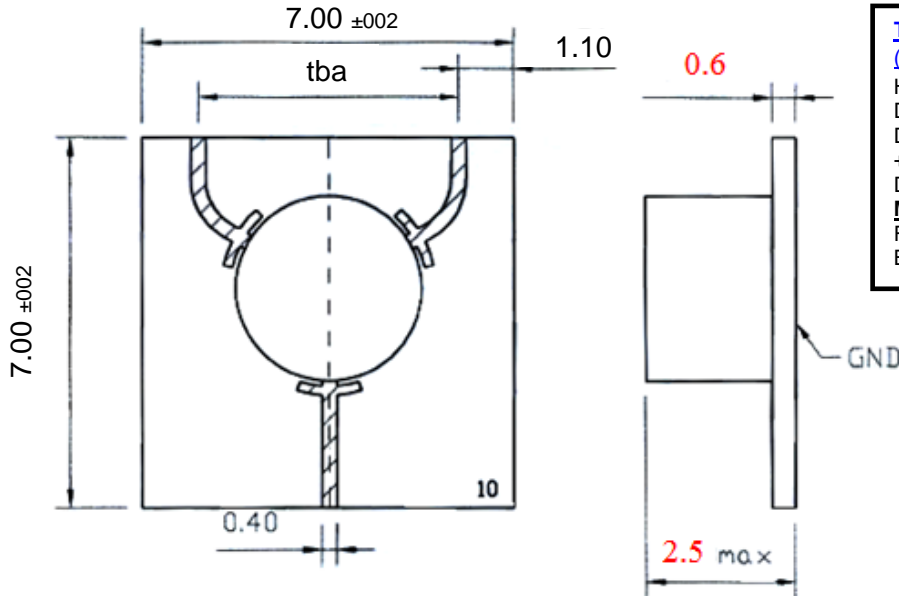


Circulator, Wide Band, Y Shape, Microstrip Substrate only (Magnetic for Steel/ Kovar Mounting)



Tolerance Table Metric (inch)

(unless otherwise stated):

Hole diameter +/- 0.1mm, (+/- 0.004")

Dimensions (w*l*h) +/- 0.3 mm, (+/- 0.015")

Dimensions (Microstrip pad, Stripline Tab, +/- 0.1mm, (+/- 0.04")

Dimensions (hole position) +/- 0.1mm, (+/- 0.04")

Machined surfaces

Flatness 0.025/mm, (0.001/ inch)

Bend radius 0.8mm, (0.031" or 1/32")

**Units: mm
Not to scale**

Direction of RF:	
R	Default ▶
L	◀

Order Examples: RADC-9-10-MSSY-10WR-M2-b
C=CIRCULATOR

Specifications:

Frequency GHz	Insertion loss dB (max)	Isolation dB (min)	VSWR	Reverse Power Watts	Forward Power Watts	Operating Temp °C	Model
9-10	0.6 0.8	20 17	1.25:1 1.35:1	10	10	room -55 to +85	MSSY

Notes:

1. The device should be mounted on the steel (Kovar) carrier or base. The minimal thickness 1mm.
2. Plating: Gold
3. Tuning conductor (97In3Ag) optional location and configuration determined by customer.
4. Humidity 5 to 95% non-condensing.
5. Maximum temperature during welding process: +350°C @ 25 msec.