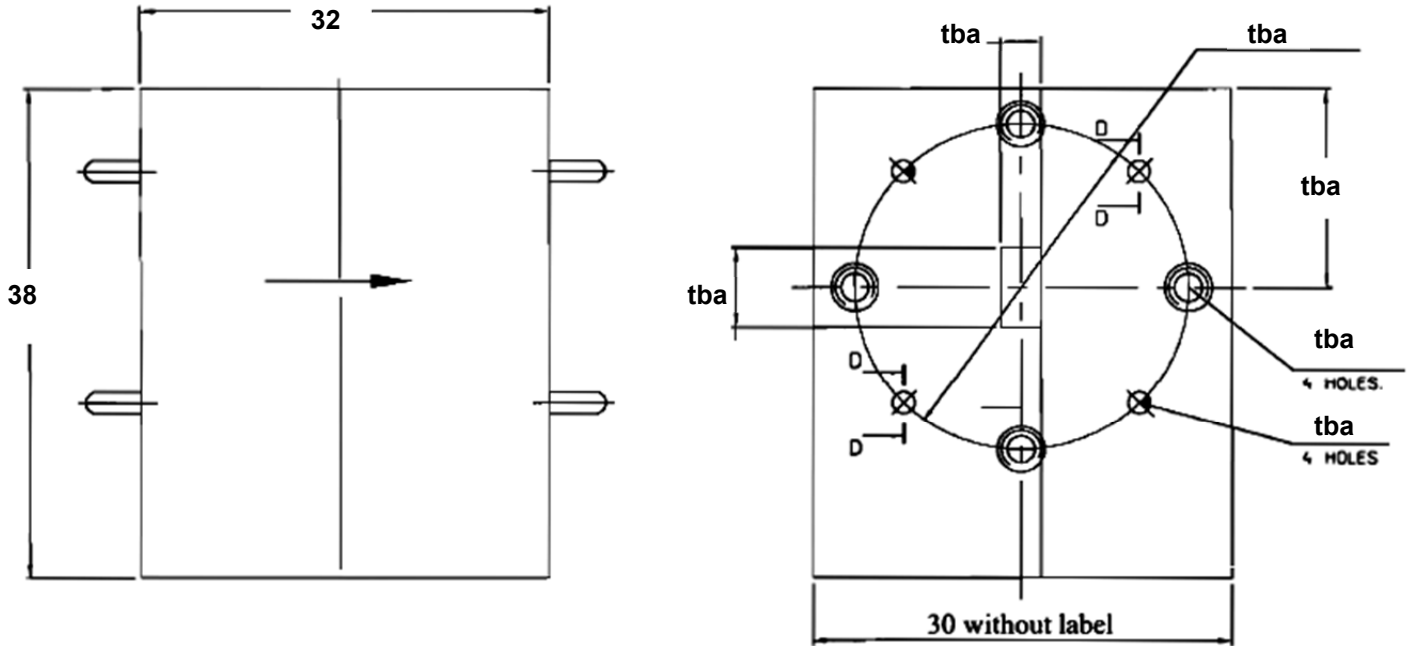
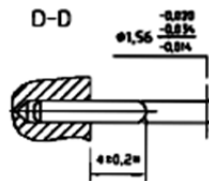


Double Junction Waveguide Isolator, 30-50 GHz Full or Part Bandwidth, WR22 Package, 1 Watt



Units: mm
Not to scale



Direction of RF:	
R	Default ▶
L	◀

Order Examples: **RADII-33-50-WR22-1WR-b**
II=ISOLATOR-ISOLATOR

Specifications			Units
Frequency Range:	30-50	33-50	GHz
Insertion Loss	2.6	1.6	dB (max)
Isolation	17	25	dB (min)
VSWR	2.2:1	1.7:1	
Power	1	1	Watt
Waveguide	WR22	WR22	
Operating temperature range	0 to +50	0 to +50	°C