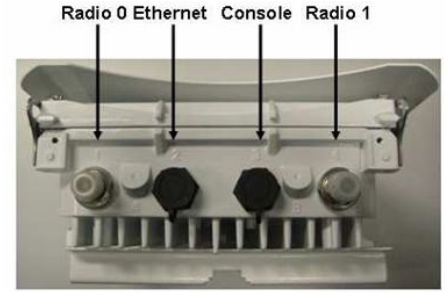
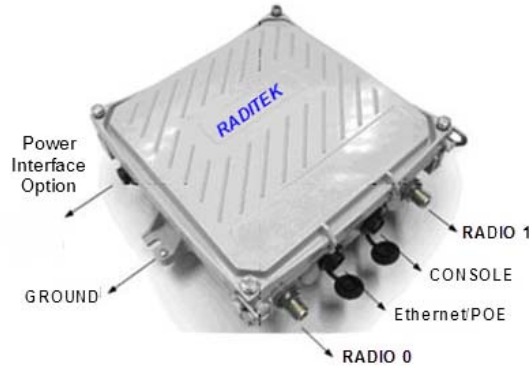


RADITEK

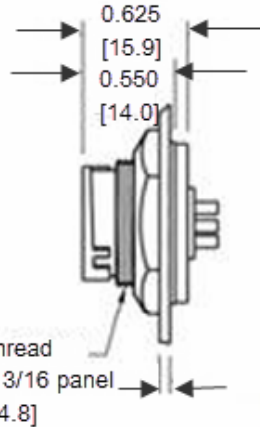
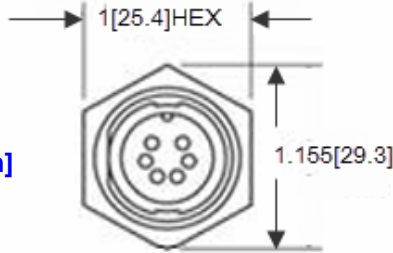
TELECOM Radlink / 5 GHz

RTR 5GHz Point to Multi Point Ethernet Interface UNI Band Radio



Dimensions in brackets are in centimeters

Units: Inch [mm]
Not to scale



Power Connector



3# 12

Console Port

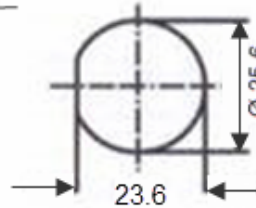


5# 20

Ethernet Port



9# 20



Waterproof cover
With rubber lead

Features:

- IEEE802.11a supported
- Transmitted power can be adjusted
- Point to Point and Point to Multi-Point
- MAC based ACL and MAC filtering supported
- SSID and VLAN supported
- SNMP V2 management
- PoE

Options		Description
1	I 8d	5.8GHz Wireless 802.11 a AP, with the medium gain internal antenna 8dBi
2	I 14d	5.8GHz Wireless 802.11 a AP, with the maximum gain internal antenna 14dBi
3	E32d	Model 1 With external Antenna 32dBi see page3

Order Examples: RTR-P2P-5. 725~5.825 -E 32dBi-g16

Description: (Tranceiver, 5. 725~5.825GHz Point to Point, 32dBi gain external Antenna)

Additional Options: I 8dBi gain internal antenna I 14dBi gain maximum internal antenna)

Frequency Bands: 5.150~5.350, 5.470~5. 725, 5. 725~5.825GHz

Standards	
Ethernet	IEEE802.3 / IEEE802.3u
Wireless	IEEE802.11a
Ethernet interface	Full/Half Duplex mode
	10/100 Base-T Compatible

Ethernet Interface Unlicensed Band Radio Point to Point 5.8GHz

RF		
Frequency band	5.150~5.350G Hz	
	5.470~5.725GHz	
	5.725~5.825G Hz	
Modulation	IEEE802.11a: BPSK/QPSK/16QAM/64QAM/OFDM	
Data rate	IEEE802.11a: 54/48/36/24/18/12/11/9/6 Mbps	
Receiver sensitivity	-73dbm@54Mbps	
	-85dbm@24Mbps	
	-92d bm@6M bps	
Transmitted power	23d Bm@6~36M bps	
	22dBm@48Mbps	
	20dBm@54Mbps	
Transmit distance	1: up to 5km(24Mbps capacity)	
	2: Up to 15km(24Mbps capacity), up to 20km(11Mbps capacity)	
	3: Use external high gain antenna: up to 30km(24Mbps capacity)*	
Internal Antenna		
Polarization	Dual Polarization	
Gain	1 MP Medium Power:8dBi	
	2 HP High Power :14dBi	
	3 Ext Antenna With external Antenna	
Radiation	Directional	
Network		
Operation Mode	Point to Point	
	Point to Multi-Point	
LAN	VLAN with multiple SSID	
Bridge	Bridge: STP	
Protocol	TCP, IP, IPX, NETBEUI	
Security		
WEP	WEP: 64/128 bit	
WPA	WPA/AES/ACL	
MAC	MAC filtering	
Management		
Configuration	Web(HTTP / HTTPS), Telnet	
Firmware Upgrade	WEB firmware upgrade, FTP firmware upgrade	
SNMP	SNMP V1/V2	
LED indicator	RSSI LED indicator offering real time signal	
Hardware		
Size	256X120X64mm	
Weight	<500g	
Power supply	PoE, or 100~260Vac 50/60Hz	
Power consumption	10W(min), 15W(max)	
Physical Interface	1 x I0/I00Base-T interface,RJ-45	
	1 x Reset Button	
	1 x Antenna Switch(internal and External Switch)	
	1 x N-Type Connector(Connect external antenna)	
Environment	Cover grade	IP68
	Lighting protection	IECI000-4-2/instant surge 4kV
	Working temperature	-40°C~+60°C
	Store temperature	-50°C~+70°C
	Humidity	0%~100%

Ethernet Interface Unlicensed Band Radio Point to Point 5.8GHz

External Antenna **RGANT-5.725-5.825G-32dBi-g16**



Specifications		Units
Frequency Range	5.725~5.825	GHz
Gain	32	dBi
Input Impedance	50	ohm
Polarization	Vertical	
Beamwidth, Horizontal	8	°
Beamwidth, Vertical	10	°
VSWR	≤1.5	:1
Front-to-Back Ratio	20dB	
Connector	N-Type Female	
Dimension	400mm x 600	mm
Weight	<2	kg
Installation	Pole Installation	
Pole Diameter	Φ 40~50	mm
Working Temperature	-50~70	°C
Store Temperature	-55~+85	°C
Humidity	0~100	%