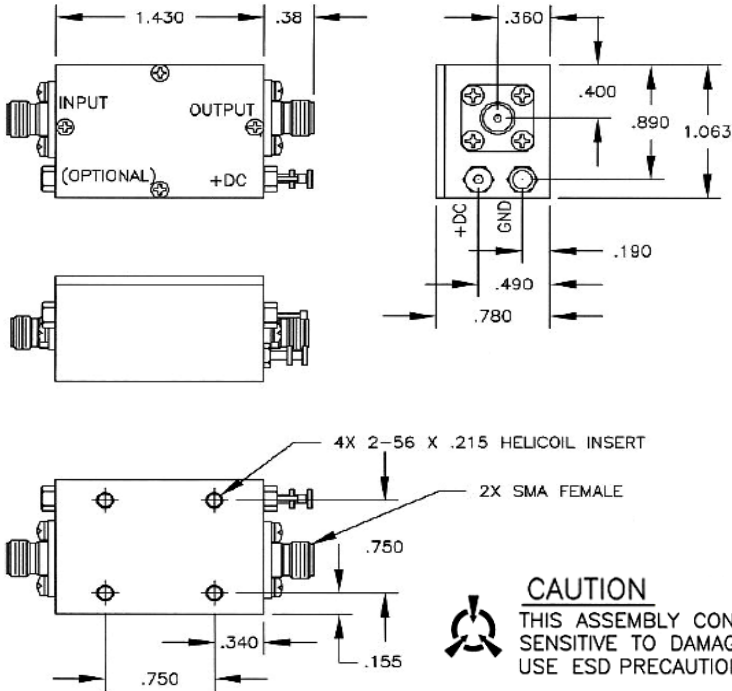


VOLTAGE CONTROL OSCILLATOR

50-100MHz, SMA Connectors, 15dBm Output Power, 15 Volts



Maximum Ratings

Ambient Operating Temperature	-54°C to + 100 °C
Storage Temperature	-62°C to + 125 °C
Case Temperature	+ 125 °C
DC Voltage	+ 20 Volts
Maximum DC Tuning Voltage	+ 20 Volts
Minimum DC Tuning Voltage	0 Volts

Features

- Low Noise Bipolar Transistor
- Broad Tuning Range
- Operating Case Temperature: -45 °C to + 85 °C
- Environmental Screening available

**Units: Inch
Not to scale**

CAUTION

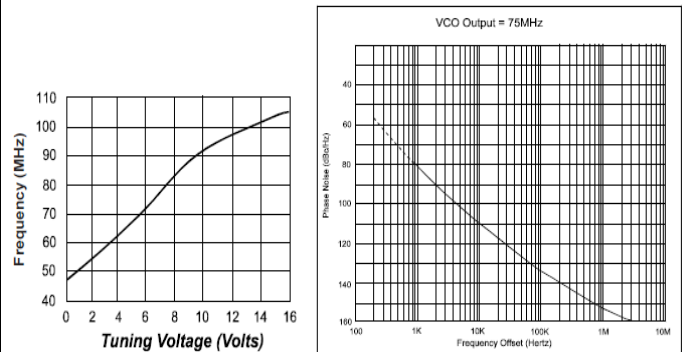
THIS ASSEMBLY CONTAINS PARTS SENSITIVE TO DAMAGE BY ELECTRO-STATIC DISCHARGE (ESD). USE ESD PRECAUTIONARY PROCEDURES WHEN TOUCHING, REMOVING OR INSERTING.

Order Examples: RVCO-50-100M-Sf-15d-15V-s7

Description: (Voltage Controlled Oscillator, 50-100MHz, SMA Female Connectors, 15dBm Output Power, 15 Volts, s7-Model)

Characteristic	TYPICAL Ta = 25 °C	MIN/MAX Ta = - 45 °C to + 85 °C
Frequency	50 - 100 MHz	50 - 100 MHz
Output Power (dBm)	+17	+15 Min.
Phase noise	-130dBc/Hz @ 100kHz offset.	
Power Flatness (dB)	±1.0	±1.5 Max.
Tuning Voltage Range (v)	1 to 13	0 to 15
Tuning Voltage Sensitivity (MHz/V)	4	1.5 Min.
Frequency setting		1.2 µS Max.
Harmonics (dBc)	-15	-10 Max.
Spurious (dBc)	<-80	-80 Max.
3dB Modulation BW, Zg = 50 Ohm	---	0.3 MHz Min.
Pushing (MHz/V)	0.5	1.5 Max.
Connectors	RF output	SMA female
	Tuning Voltage	SMA female
	Power Supply	Solder terminal
Pulling (MHz); 12dB RL	3	1.0 Max.
Frequency Drift (MHz/°C)	---	0.05 Max.
Power	Vdc	+15
	mA	60
		70 Max.

Typical Performance Data



Notes:

1. Phase Noise is measured using the Aeroflex PN9000.
2. Worst case phase noise @ 100 kHz offset across frequency range and temperature extremes is -120 dBc/Hz.

RVCO-50-100M-Sf-15d-15V-s7

Specifications may be subject to change

02/07/11

WORLD HQ: 1702L Meridian Ave. Suite 127, San Jose, Ca 95125, U.S.A.

Tel: (408) 266-7404

FAX: (408) 266-4483

WEB: www.raditek.com

E-mail: sales@raditek.com